



Bata Industrials[®]

IMPROVING WORKING LIVES



CATALOGUE 2019/20
SOUTH AFRICA

PREMIUM SAFETY FOOTWEAR RANGE

NEW RANGE



STORM HIGH

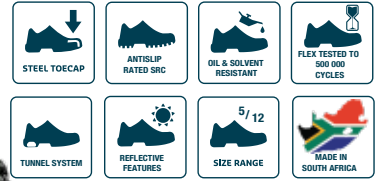
805-6524



- › Upper: Leather › Sole: Dual Density PU
- › Lining: Textile › Colours: Black or Brown
- › Industry: General Purpose, Construction, Agriculture, Engineering.

STORM LOW

885-6524



- › Upper: Leather › Sole: Dual Density PU
- › Lining: Textile › Colours: Black or Brown
- › Industry: General Purpose, Construction, Agriculture, Engineering.

TORNADO HIGH

805-6724



- › Upper: Leather › Sole: Dual Density PU
- › Lining: Textile › Colours: Black or Brown
- › Industry: General Purpose, Construction, Agriculture, Engineering.

TORNADO LOW

885-6724



- › Upper: Leather › Sole: Dual Density PU
- › Lining: Textile › Colours: Black or Brown
- › Industry: General Purpose, Construction, Agriculture, Engineering.

VOLCANO HIGH

805-6824



- › Upper: Leather › Sole: Dual Density PU
- › Lining: Textile › Colours: Black or Brown
- › Industry: General Purpose, Construction, Agriculture, Engineering.

VOLCANO LOW

885-6824



- › Upper: Leather › Sole: Dual Density PU
- › Lining: Textile › Colours: Black or Brown
- › Industry: General Purpose, Construction, Agriculture, Engineering.

HIGH END RANGE

Bickz[®]

BY BATA

BICKZ 907

893 6604

- Full grain leather/abrasion resistant rubber toecap
- FlexGuard® composite midsole
- Composite toecap
- YKK zipper
- Bickz Cool System®-lining
- Rubber sole
- Width W
- Size range: 38-48



HELIX RANGE

LONGREACH WHEAT ZIP S3

894 3303



Taking shock absorption to a new level

Helix safety work boots have it all. They are lightweight, durable, stylish and provide the highest standard of comfort in the toughest of working conditions. They feature an advanced cushioning system for the best possible shock absorption. The

Helix range achieves the best possible suspension to maximize the reduction of fatigue and stress of the feet and joints.



Industries:

Heavy industry, Security,
Construction, Petrochemistry,
Agriculture

HIGH END RANGE



TRAIL

823-6503 (Yellow)
823-8603 (Red)



- > Upper: Microfibre/Mesh
- > Sole: Phylon Midsole, Nitrile Rubber Outsole
- > Lining: Textile
- > Colours: Black/Yellow or Black/Red
- > Industry: General Purpose, Construction, Agriculture, Engineering.



HURRICANE

823-6203



- > Upper: Suede & Mesh
- > Sole: Phylon Midsole, Rubber Outsole
- > Lining: Textile
- > Colours: Black
- > Industry: General Purpose, Industrial, Logistics, Warehousing.



PERFORMANCE

894-4601

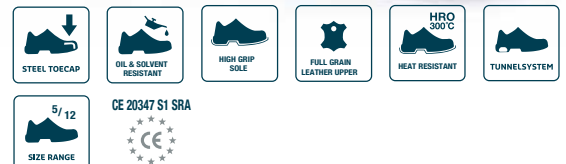


- > Upper: Leather, Crazy Horse
- > Sole: Phylon Midsole, Nitrile Rubber Outsole, TPU Stabilizer
- > Lining: Textile
- > Colours: Brown
- > Industry: General Purpose Industrial, Construction, Mining, Engineering



BI 753 Boot

893-4403 (Brown)



- > Upper: Full Grain Leather
- > Sole: Phylon Midsole, Nitrile Rubber Outsole, TPU Stabilizer
- > Lining: Orange Mesh
- > Colours: Brown
- > Industry: General Purpose Industrial, Construction, Agriculture.

SABRE RANGE

SABRE BOOT

805-6608



SABRE SHOE

885-6608



SABRE CHELSEA

855-6608



› Upper: Leather › Sole: Polyurethane › Lining: Textile
› Colours: Black
› Industry: General Purpose Industrial, Construction, Agriculture, Automotive.

PU RANGE

ATLANTIC

805-6624 (Black)
805-4424 (Brown)



PACIFIC

885-6624 (Black)
885-4424 (Brown)



› Upper: Leather › Sole: Dual Density PU
› Lining: Bata Ventair® › Colours: Black or Brown
› Industry: General Purpose, Construction, Agriculture, Engineering.

CHELSEA SMOOTH

855-6224 (Black)
855-4224 (Brown)



CHELSEA

855-6624 (Black)
855-4424 (Brown)



RANCHER

855-4225 (Brown)
855-6225 (Black)



› Upper: Leather › Sole: Dual Density PU
› Lining: Textile › Colours: Black or Brown
› Industry: General Purpose, Industrial, Construction, Agriculture, Automotive.



SOLID FOOTSTEPS

For over 125 years, Bata has been living and breathing shoes. As a global leader in our field, we have managed to continuously shape the world of safety footwear. Innovation, safety and comfort have always been our top priorities. From the moment we set our first footsteps in the field to where we are now.

Growing together

In 1894, Thomas J. Bata established his first shoe factory in Zlín, Czechoslovakia. In 1934, the location in Best followed. Not only was a high-tech factory built, but a complete Bata village was established. All to provide the Bata workers with everything they needed. With 35,000 people working for Bata in over 70 countries, Bata now is one of the oldest and largest shoe companies in the world.

The core of Bata's success is in the way we look at things. Creating the perfect safety shoe for every situation is a complex challenge, but that's exactly what makes it so interesting. We feel like it's our mission to maintain the highest standards in safety and quality, without giving in on comfort. This dedication that runs like a thread to our company, is what truly makes the difference. We are proud to know that we help millions of people make their way through their working day with the ideal pair of safety shoes for their work.

Sustainability

Bata Industrials produces much of its professional footwear locally. This does not only give us benefits in terms of logistics, but also makes our environmental footprint smaller. Bata and Bata Industrials have a strong focus on sustainability. We care about the impact we have on our customers, our people and our surroundings. You can find more information about our sustainability programs on www.bataindustrials.com, www.thebatacompany.com and www.batachildrensprogram.org. The Bata Children's Program already has over 7,000 volunteer participants and has had a positive impact on over 250,000 children.

Family business with global coverage

Bata Industrials sells nine million pairs of professional footwear a year in over 70 countries. Despite its scale, it's still a down-to-earth family business, with safety, health, the protection and comfort of its workers as its priorities.

Evolving products

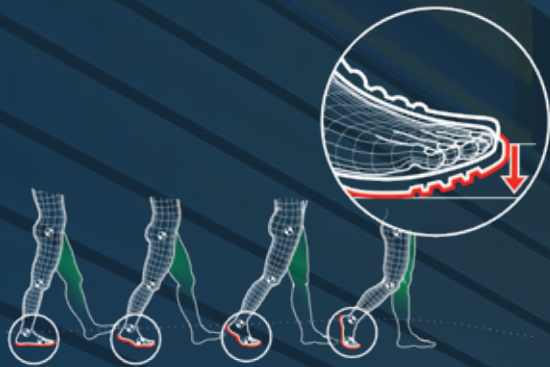
Over the years, Bata Best has produced fashion shoes, slippers, car tires, children's shoes and socks. In the 1970's, Bata Best also started manufacturing professional footwear and socks, and is now the global headquarters for Bata Industrials.

BATA SOUTH AFRICA FACTORY LOSKOP

DID YOU KNOW?

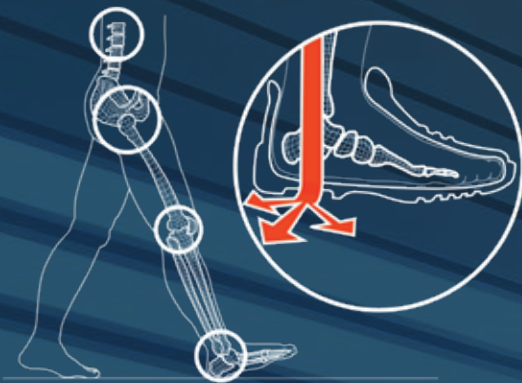
- Established in 1983.
- 90% Woman dominated employees
- Situated in the foothills of Drakensberg called LOSKOP.
- Presently total employees 400.
- It is **green factory** as the adhesives, lacquers and other chemical used are all water based.
- It has following facilities.
 - a. School shoes Manufacturing (Original Injected Toughees)
 - b. Gum boot Manufacturing for Rain, Farmers and Mines.
 - c. Safety shoes with Poly Urethane Dual Density.
 - d. Palletizing Plant for our own soling.
 - e. Modern Laboratory, to check in comings and outgoing products as per Bata standards.

TECHNOLOGY+



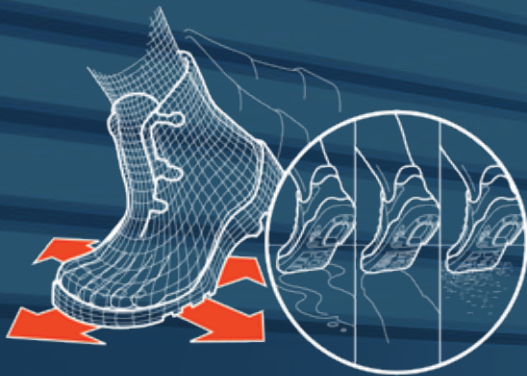
EASY ROLLING SYSTEM®

To prevent feet becoming tired, Bata Industrials devotes a lot of attention not only to the flexibility of the sole and the weight of the materials from which the shoe is made up, but also to the quality and shape of the foot bed. One of our latest findings in that area is the Easy Rolling System®, a subtle adaptation with major consequences. By pre-forming the front of the foot the natural motion of the foot is supported in an optimum way. The effect of this is energy saving and comfort increasing. It is details of this kind which make the difference on the work floor.



TUNNELSYSTEM®

Every collection of Bata Industrials has its own unique extras. However, there is one invention that sets every safety shoe from Bata Industrials apart: the ingenious Tunnelssystem®. This distinctive notch in the heel (the 'tunnel') deforms as the heel hits the ground and spreads the pressure over a larger surface area. What is unique about this system is that the wearer's weight has no effect on the function. The built-in shock absorber spares the joints and keeps the wearer upright. Spreading the load also gives the heel extra stability. This prevents fatigue and loss of concentration and hence avoids a great number of accidents.



ANTISLIP SOLES

Selecting the most suitable sole type is dependent on the working surface, the degree to which this is polluted and the tasks someone has to perform. That is why Bata Industrials has developed several types of outer soles, each with its own profile. In order of slip resistance these are PU, which is above all light and flexible, TPU, which is antislip in all directions and TriTech Plus®, a sole manufactured using three densities of rubber, which is extra wear-resistant and offers maximum protection against slipping, shards, oils, acids and heat (to 300 degrees Centigrade). This means that we can provide the right grip on the work floor under all circumstances.



LIGHT WEIGHT

In footwear design, safety and comfort are usually contradictory concepts. Bata Industrials shoes are developed on the basis of the common ground between these two features. Safe and sturdy, yet lightweight and comfortable. The shoes with higher specifications with rubber outsoles, destined for heavy work, are also relatively lightweight and comfortable.

PU RANGE FOR WOMEN



AIDA
805-6424



BAHATI
885-6424



› Upper: Leather › Sole: Dual Density PU
› Lining: Bata Ventair® Lining › Colours: Black
› Industry: General Purpose, Construction, Agriculture, Engineering.

COMBAT RANGE



COMMANDO 1
805-6050

› Upper: Canvas › Sole: PU Sole
› Lining: Textile › Colours: Black
› Industry: Security, Military



SARGEANT
895-6609



› Upper: Leather › Sole: Rubber
› Lining: Textile › Colours: Black
› Industry: Security, Military, some Agriculture.



COMMANDO 2
805-6470

› Upper: Canvas › Sole: PU Sole
› Lining: Textile › Colours: Black
› Industry: Security, Military



CANVAS BOOT
805-6655

› Upper: Canvas › Sole: PU Sole
› Lining: Textile › Colours: Black
› Industry: Security, Military

OFFICE RANGE

BATA PROFESSIONAL 836-6102



- > Upper: Leather
- > Sole: Rubber (SABS)
- > Lining: Textile & Synthetic
- > Colours: Black
- > Industry: Corporate Uniform, Security, Hospitality.

CLERK 884-6613



- > Upper: Leather
- > Sole: Nitrile PVC
- > Lining: Synthetic
- > Colours: Black
- > Industry: Corporate Uniform, Security, Hospitality.

PERFORMER 584-6615



- > Upper: Synthetic
- > Sole: PVC
- > Lining: Synthetic
- > Colours: Black
- > Industry: Security, Hospitality, Cleaning, Nursing.

BELLA 554-6166



- > Upper: Synthetic
- > Sole: Polyurethane
- > Lining: Synthetic
- > Colours: Black
- > Industry: Corporate Uniform, Nursing, Cleaning, Hospitality.

PENNY 551-6617



- > Upper: Synthetic
- > Sole: PVC
- > Lining: Non Woven
- > Colours: Black
- > Industry: Corporate Uniform, Nursing, Hospitality.

CLAIRE 651-6618



- > Upper: Synthetic
- > Sole: PVC
- > Lining: Synthetic
- > Colours: Black
- > Industry: Corporate Uniform, Security, Nursing.

BATA SHARON 659-6618



GUMBOOTS

MADE IN SOUTH AFRICA



RHINO 1
892-6320



- › Upper: Virgin PVC
- › Sole: Nitrile PVC
- › Lining: Textile
- › Colours: Black/Toffee
- › Industry: General Purpose Industrial, Construction, Agriculture, Mining.



RHINO 2
892-1519



- › Upper: Virgin PVC
- › Sole: Nitrile PVC
- › Lining: Textile
- › Colours: White/Red
- › Industry: General Purpose, Butcheries, Kitchens, Laboratories, Food Processing.



JOBBER
892-6626



- › Upper: PVC
- › Sole: PVC
- › Lining: Textile
- › Colours: Black
- › Industry: Light Construction, Agriculture, Car Washes, Wet Environments.



ELEGANT
592-1527



- › Upper: Virgin PVC
- › Sole: Nitrile PVC
- › Lining: Textile
- › Colours: White/Red
- › Industry: General Purpose, Butcheries, Kitchens, Bakeries, Food Environments, Laboratories.



JOBBER
892-1525



JOBBER MULE
872-1526



- › Upper: Virgin PVC
- › Sole: Nitrile PVC
- › Lining: Textile
- › Colours: White/Red
- › Industry: Butcheries, Kitchens, Bakeries.

JOBBER MULE
872-6626



- › Upper: PVC
- › Sole: PVC
- › Lining: Textile
- › Colours: Black
- › Industry: Kitchens, Bakeries, Cleaning Services.



RHINO 2
892-6319



- > Upper: Virgin PVC
- > Sole: Nitrile PVC
- > Lining: Textile
- > Colours: Black/Toffee
- > Industry: General Purpose Industrial, Construction, Roadworks, Chemical Environments, Mining



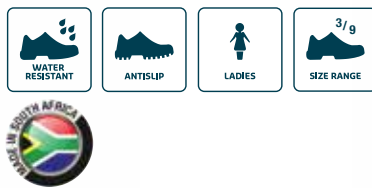
RHINO 2
892-6619



- > Upper: PVC
- > Sole: PVC
- > Lining: Textile
- > Colours: Black
- > Industry: General Purpose, Construction, Agriculture.



ELEGANT
592-6627



- > Upper: PVC
- > Sole: PVC
- > Lining: Textile
- > Colours: Black
- > Industry: General Purpose Agriculture, Car Washes, Wet Environments.



RHINO 3
892-6621



- > Upper: PVC
- > Sole: PVC
- > Lining: Textile
- > Colours: Black
- > Industry: General Purpose, Construction, Quarries, Select Agriculture, Heavy Duty Environments

ELEGANT MULE
572-1528



- > Upper: Virgin PVC
- > Sole: Nitrile PVC
- > Lining: Textile
- > Colours: White/Red
- > Industry: Kitchens, Bakeries, Cleaning Services.

LADIES MULE
572-6628



- > Upper: PVC
- > Sole: PVC
- > Lining: Textile
- > Colours: Black
- > Industry: Kitchens, Bakeries, Cleaning Services.

KIDS CAMO GUMBOOTS

GREEN GUMBOOTS

102-7701 (Size: 4-9)
202-7701 (Size: 10-2)



BLUE GUMBOOTS

102-9901 (Size: 4-9)
202-9901 (Size: 10-2)



PINK GUMBOOTS

102-5501 (Size: 4-9)
202-5501 (Size: 10-2)



SAFARI RANGE

SAFARI BOOT TAUPE

854-3011 (Size: 6-12)
454-3011 (Size: 2-5)
154-3011 (Size: 4-8)



SAFARI BOOT BROWN

854-4011 (Size: 6-12)
454-4011 (Size: 2-5)
154-4011 (Size: 4-8)



SAFARI BOOT BLACK

854-6011 (Size: 6-12)
454-6011 (Size: 2-5)
154-6011 (Size: 4-8)



SAFARI BOOT NAVY/RED

854-9511 (Mens Size: 6-12)
554-9511 (Ladies Size: 3-8)
454-9511 (Youths Size: 2-5)



SAFARI BOOT PINK

554-5411 (Ladies Size: 3-8)



SAFARI LACE-UP STC

804-4423 (Mens Size: 6-12)



CHELSEA SAFARI LEATHER

804-4426 (Mens Size: 6-12) STC



CHELSEA SAFARI LEATHER

804-4425 (Mens Size: 6-12) NSTC



CHELSEA BOOT TAUPE

854-3012 (Mens Size: 6-12)

